

ALZBIOMARKER

Alzheimer's Disease vs Control: albumin ratio (CSF/Serum and/or Plasma)

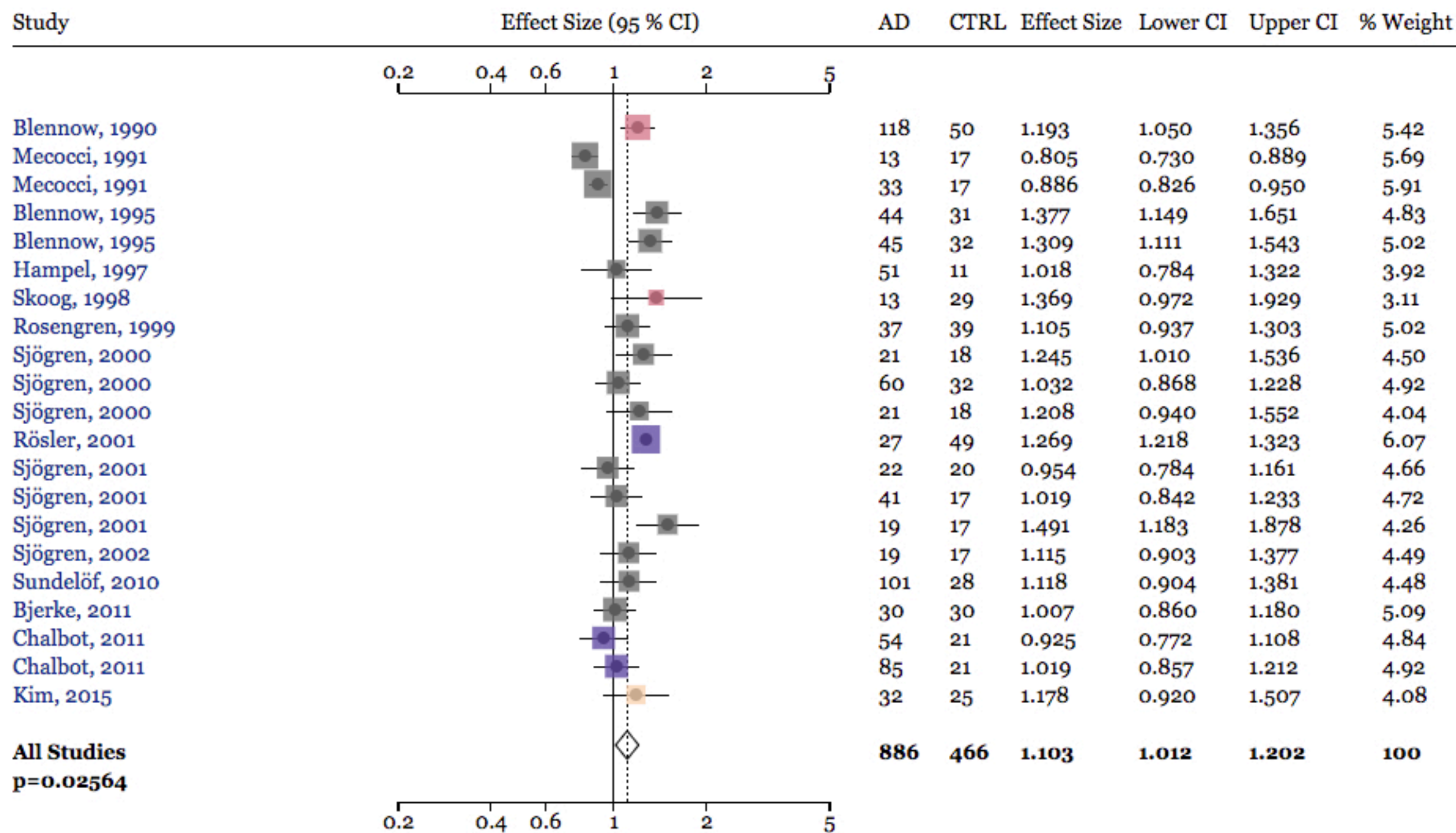
Meta-analysis Results: The ratio of albumin protein in the cerebrospinal fluid compared to levels in the plasma or serum was slightly higher in people with Alzheimer's disease than in controls (effect size = 1.103, $p = 0.02564$). The effect was marginal. The albumin ratio is considered a measure of blood-brain barrier function.

Colorimetric assay

Immunoelectrophoresis

Nephelometry

Other/Not Specified



How to interpret a forest plot: Each individual effect size (ES) is a ratio of the mean biomarker level in one condition over the mean level in another condition. An ES equal to 1 means that the two conditions had identical mean values. An ES > 1 indicates higher levels in the first condition, whereas an ES < 1 indicates lower levels in the first condition. The overall ES, indicated by a black diamond, is a weighted average of the individual effect sizes. The weight of each data point was determined by the inverse of the variance and is reflected in the size of each square. The width of the overall ES diamond is determined by the 95 percent confidence interval. Data out of range of the scale, including ES and confidence intervals, are indicated by an arrowhead at the edge of the plot, when applicable.